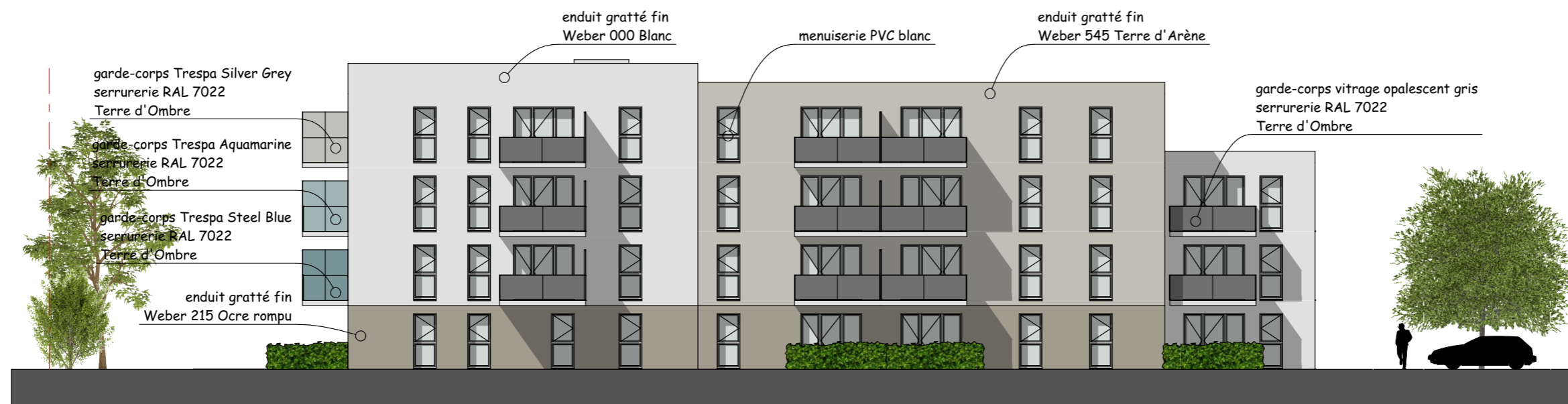
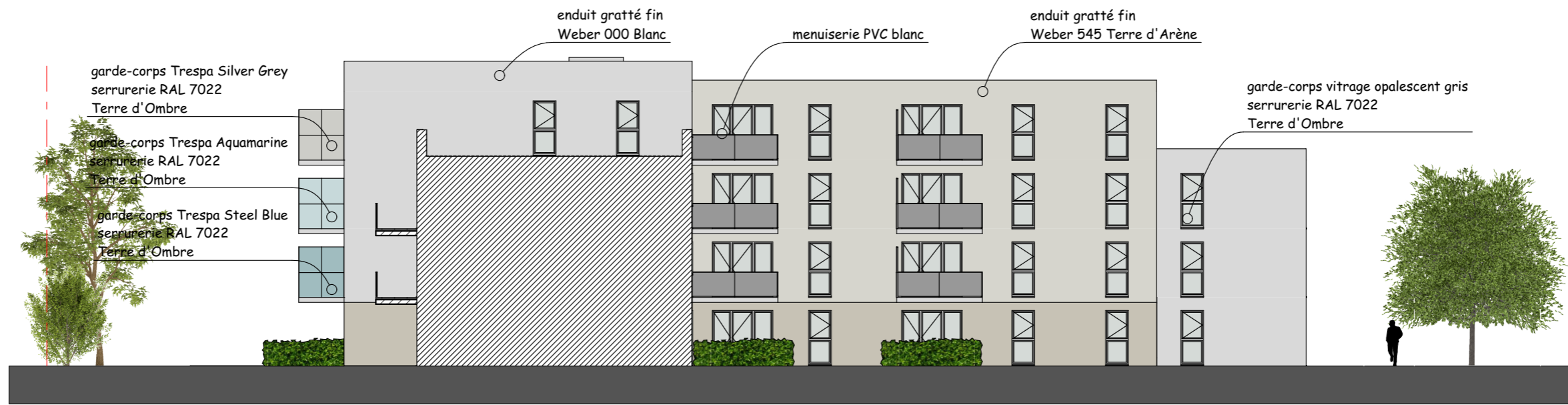


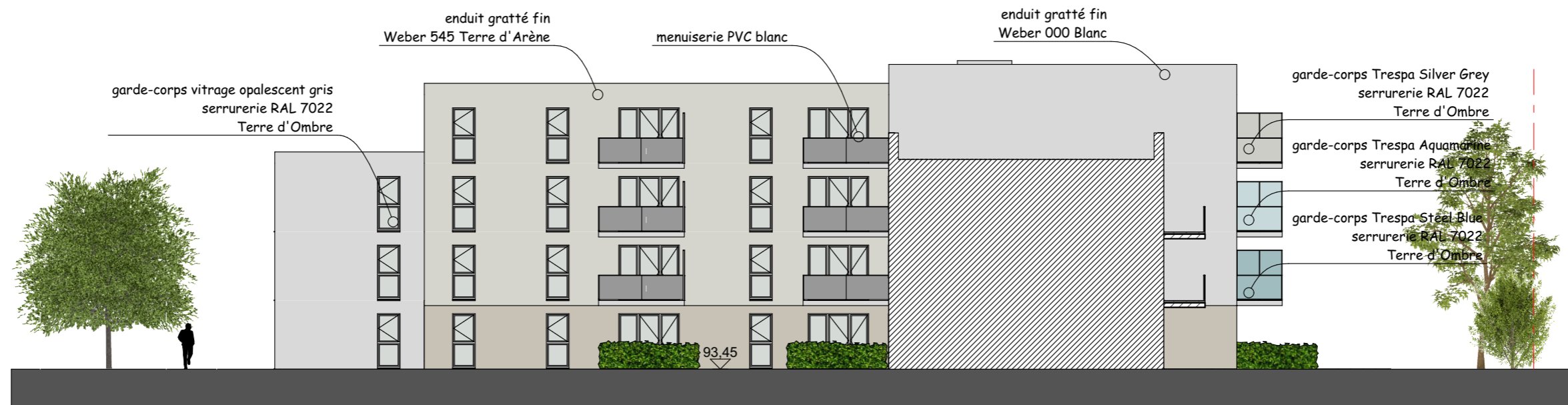
Façade Ouest



Façade Est



Façade Ouest Intérieure



Façade Est Intérieure



Façade Nord



Façade Sud





**SILVER GREY**  
A03.4.0



**AQUAMARINE**  
A28.2.1



**STEEL BLUE**  
A24.4.1

Habillage Trespa sur les cotés des balcons, les  
pares-vues et les meneaux de la façade d'entrée



Vue sur l'entrée



Enduit gratté fin - Weber  
000 Blanc



Enduit gratté fin - Weber  
545 Terre d'Arène



Enduit gratté fin - Weber  
215 Ocre rompu



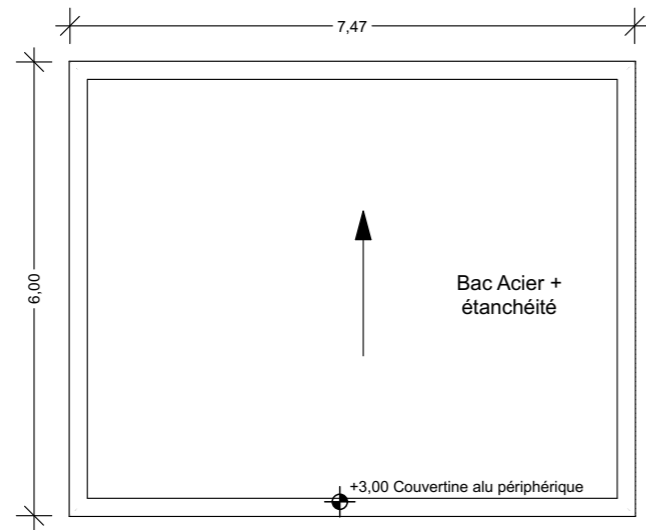
Perspective Sud-Ouest



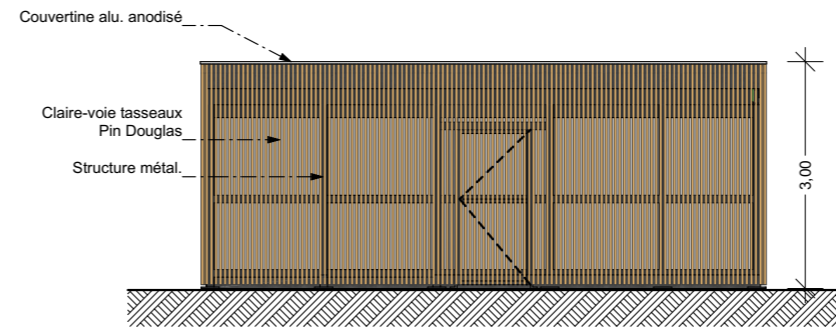
vitrage opalescent gris

**GOLHEN ASSOCIÉS**  
4, rue du Pâtis Tatelin  
3 5 7 0 0 R E N N E S  
Tél. 02 99 68 65 12  
Fax. 02 99 68 68 97  
agence@golhen-associes.archi

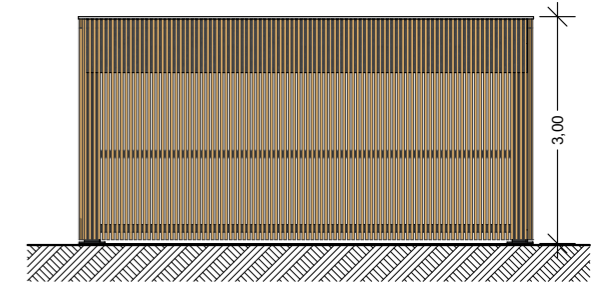




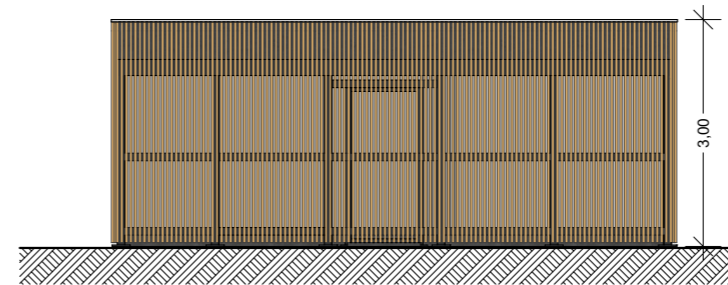
PLAN DE TOITURE



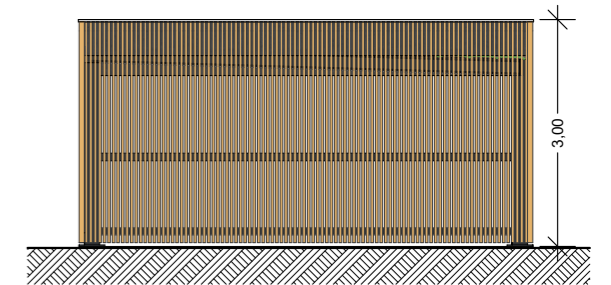
FACADE SUD



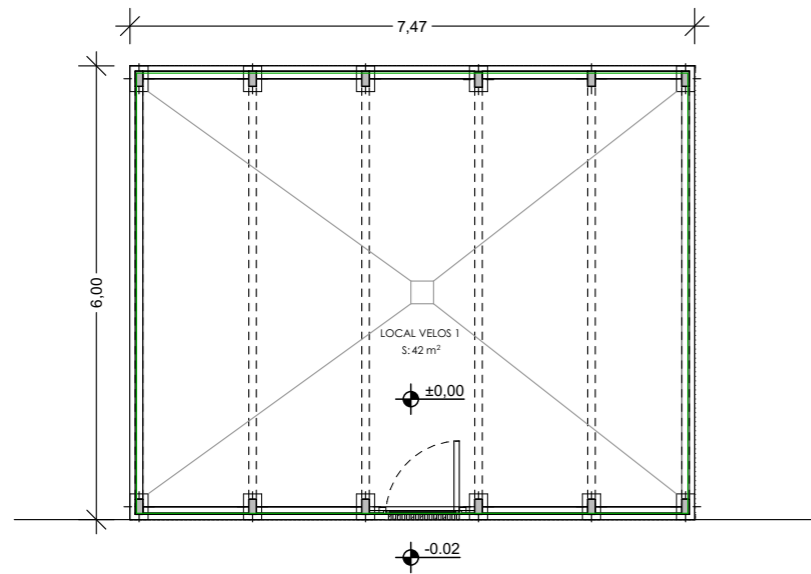
FACADE OUEST



FACADE NORD



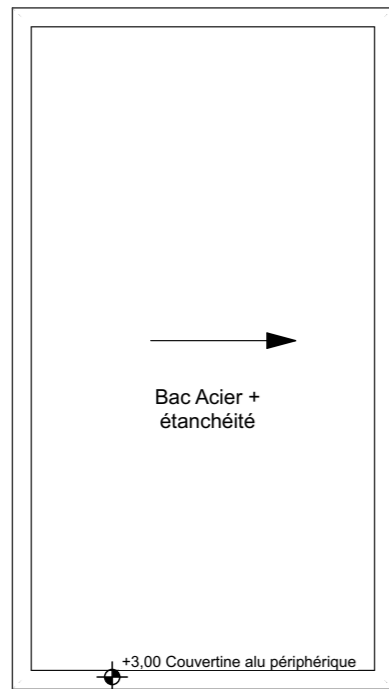
FACADE EST



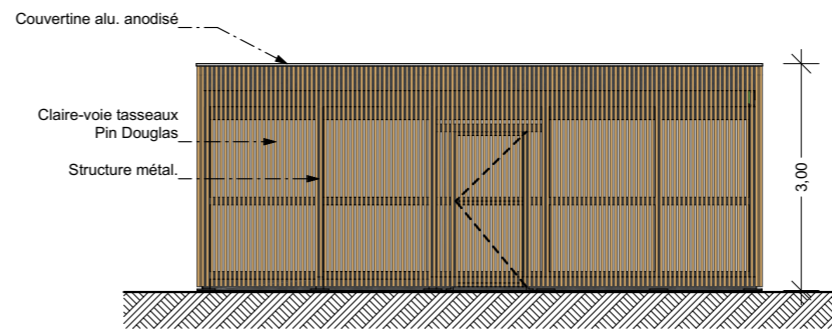
PLAN REZ-DE-CHAUSSÉE

**GOLHEN ASSOCIÉS**  
 4, rue du Pâtis Tatelin  
 3 5 7 0 0 R E N N E S  
 Tél. 02 99 68 65 12  
 Fax. 02 99 68 68 97  
 agence@golhen-associes.archi

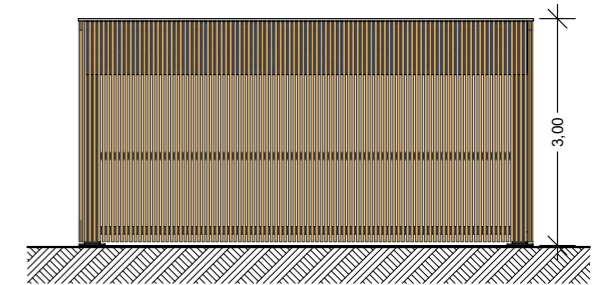




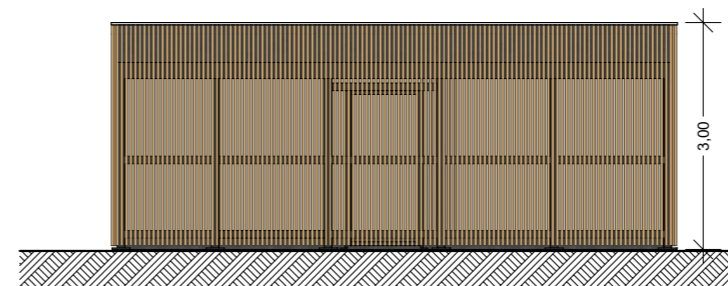
PLAN DE TOITURE



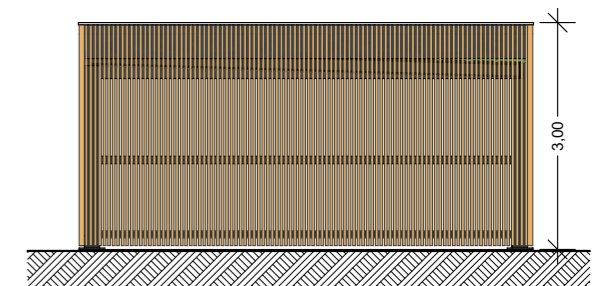
FACADE SUD



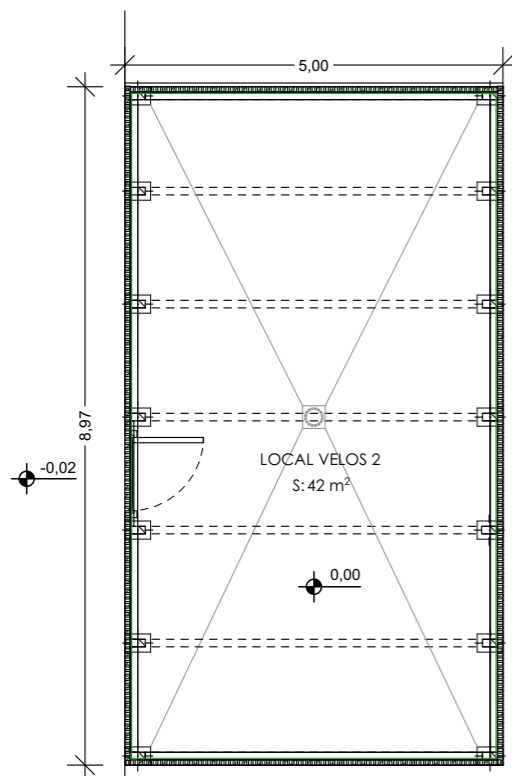
FACADE OUEST



FACADE NORD



FACADE EST



PLAN REZ-DE-CHAUSSÉE

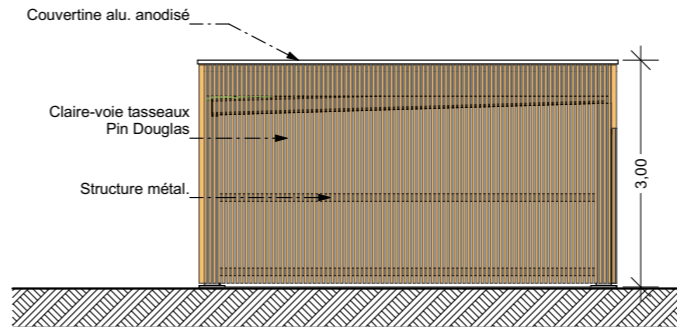


**GOLHEN ASSOCIÉS**  
 4, rue du Pâtis Tatelin  
 3 5 7 0 0 R E N N E S  
 Tél. 02 99 68 65 12  
 Fax. 02 99 68 68 97  
 agence@golhen-associes.archi

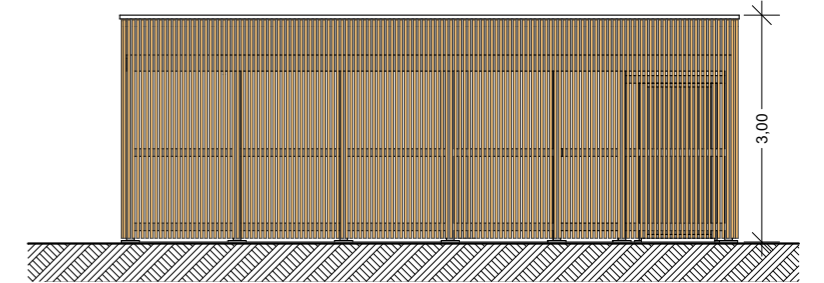




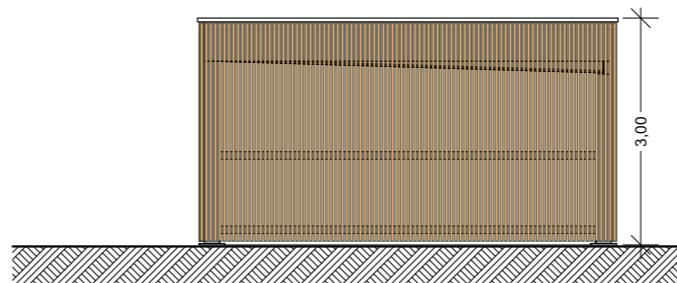
PLAN DE TOITURE



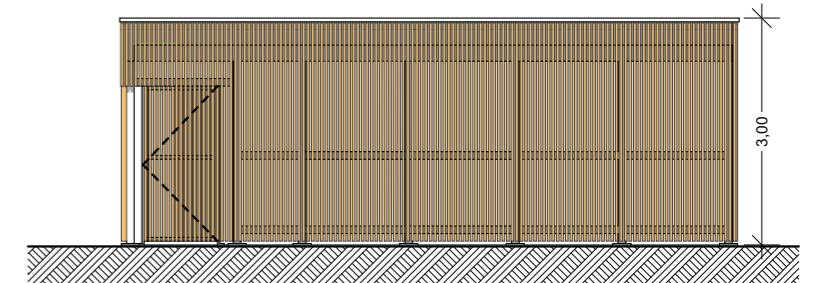
FACADE SUD



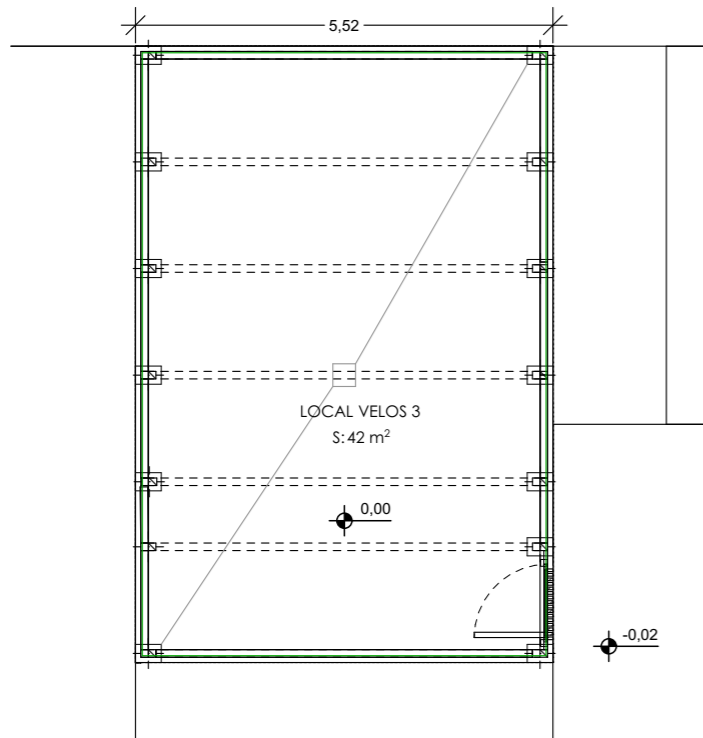
FACADE OUEST



FACADE NORD



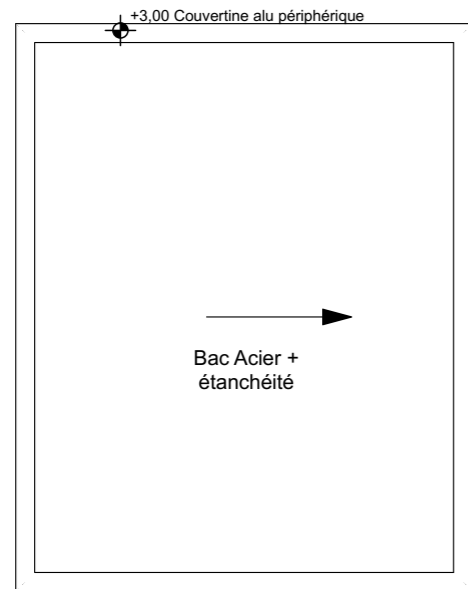
FACADE EST



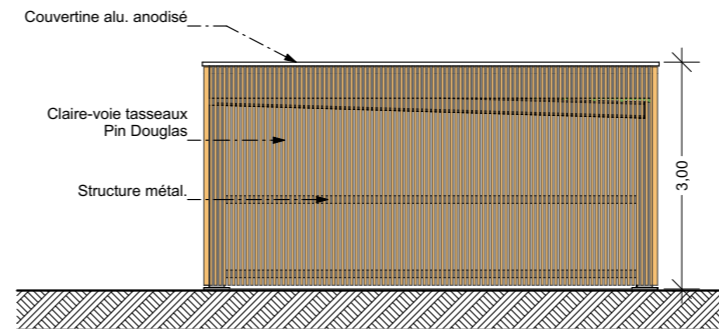
PLAN REZ-DE-CHAUSSÉE

**GOLHEN ASSOCIÉS**  
 4, rue du Pâtis Tatelin  
 3 5 7 0 0 R E N N E S  
 Tél. 02 99 68 65 12  
 Fax. 02 99 68 68 97  
 agence@golhen-associes.archi

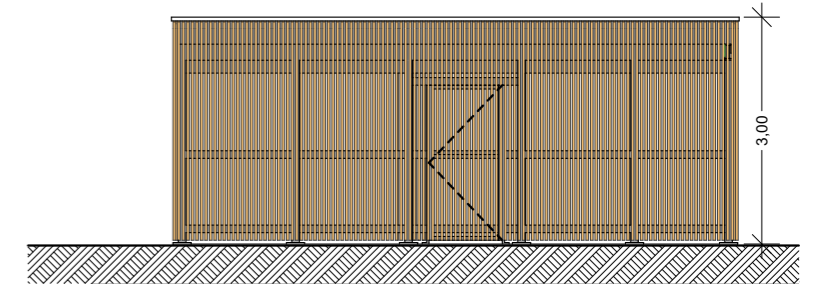




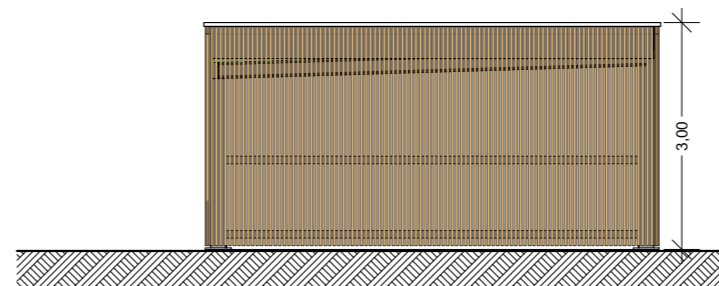
PLAN DE TOITURE



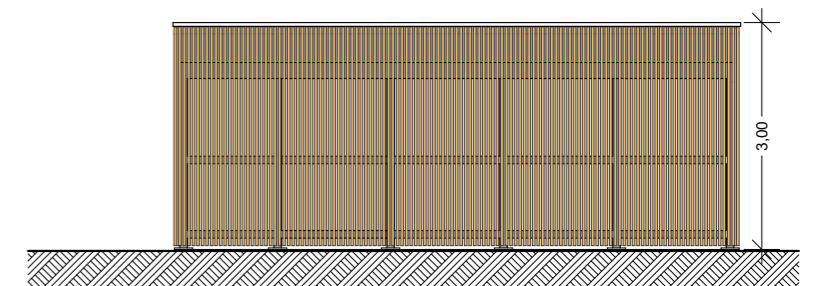
FACADE SUD



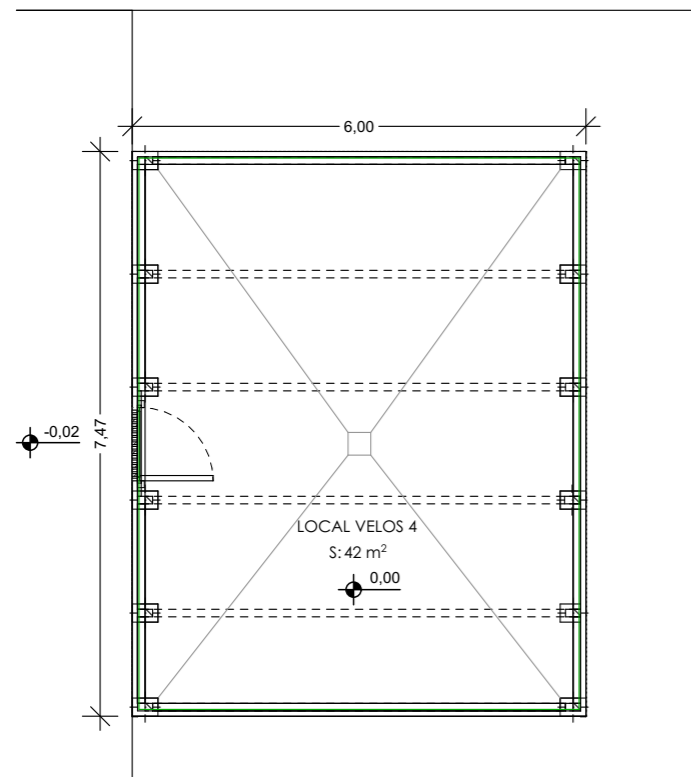
FACADE OUEST



FACADE NORD

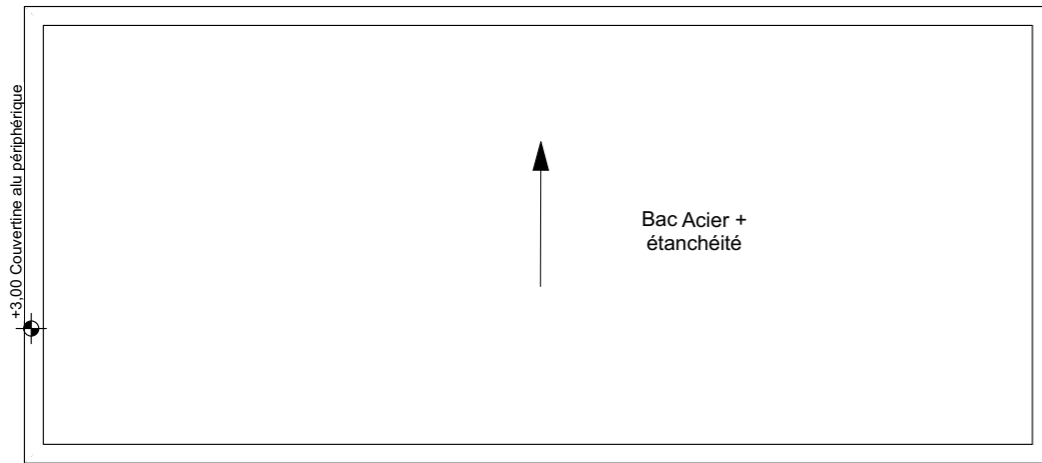


FACADE EST

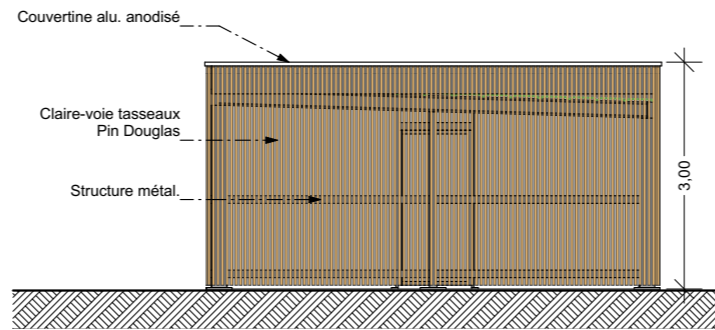
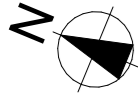


PLAN REZ-DE-CHAUSSÉE

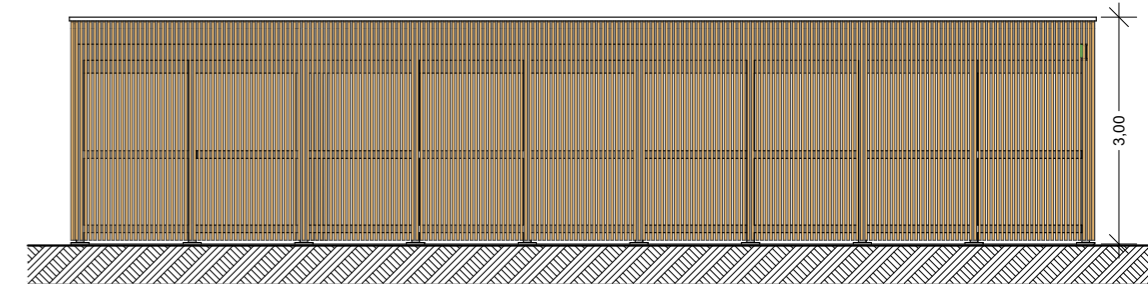




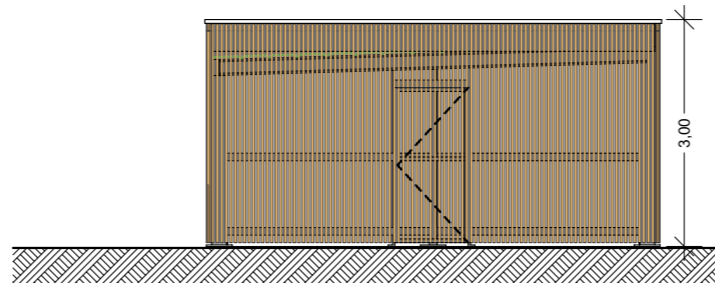
PLAN DE TOITURE



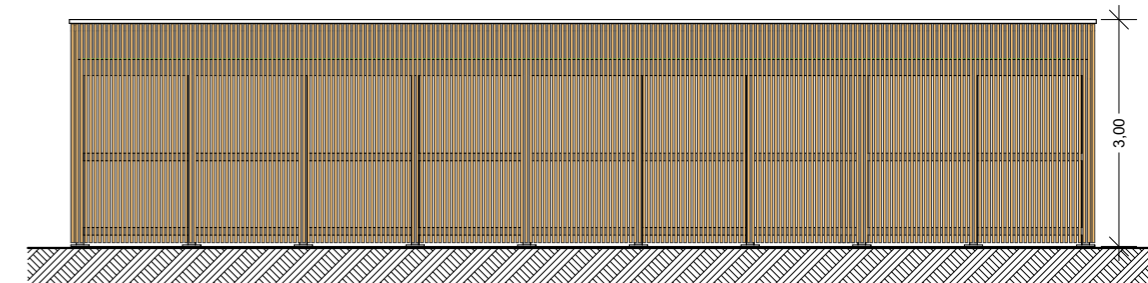
FACADE SUD



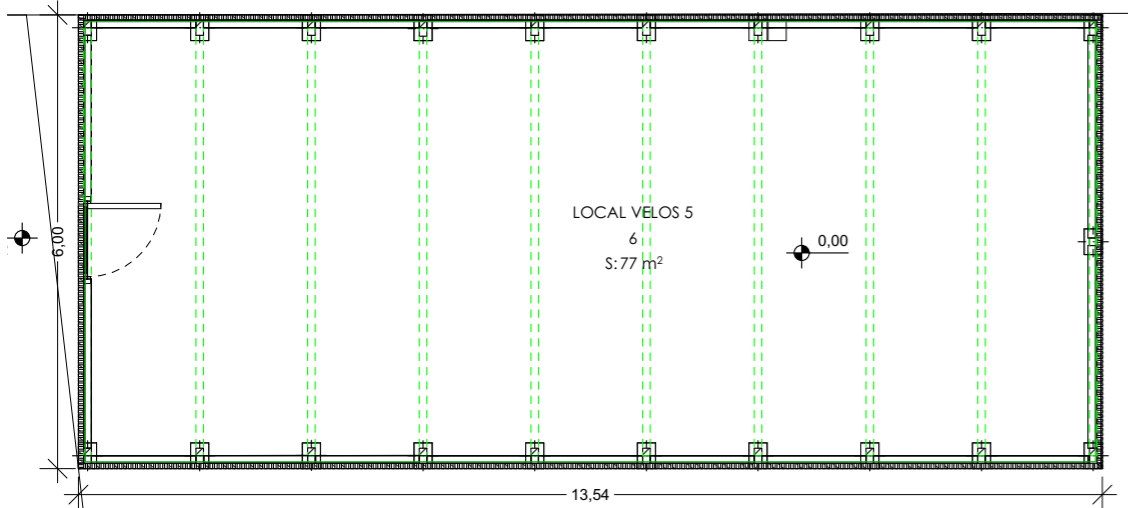
FACADE OUEST



FACADE NORD



FACADE EST



PLAN REZ-DE-CHAUSSÉE









VOLUMETRIES DES BATIMENTS A ET B

VOLUMETRIE DU BATIMENT E

VOLUMETRIES DES BATIMENTS C ET D



**GOLHEN ASSOCIÉS**  
 4, rue du Pâtis Tatelin  
 3 5 7 0 0 R E N N E S  
 Tél. 02 99 68 65 12  
 Fax. 02 99 68 68 97  
[agence@golhen-associes.archi](mailto:agence@golhen-associes.archi)





Vue 4



Vue 1



Vue 5



Vue 6

**GOLHEN ASSOCIÉS**  
 4, rue du Pâtis Tatelin  
 35700 RENNES  
 Tél. 02 99 68 65 12  
 Fax. 02 99 68 68 97  
[agence@golhen-associes.archi](mailto:agence@golhen-associes.archi)

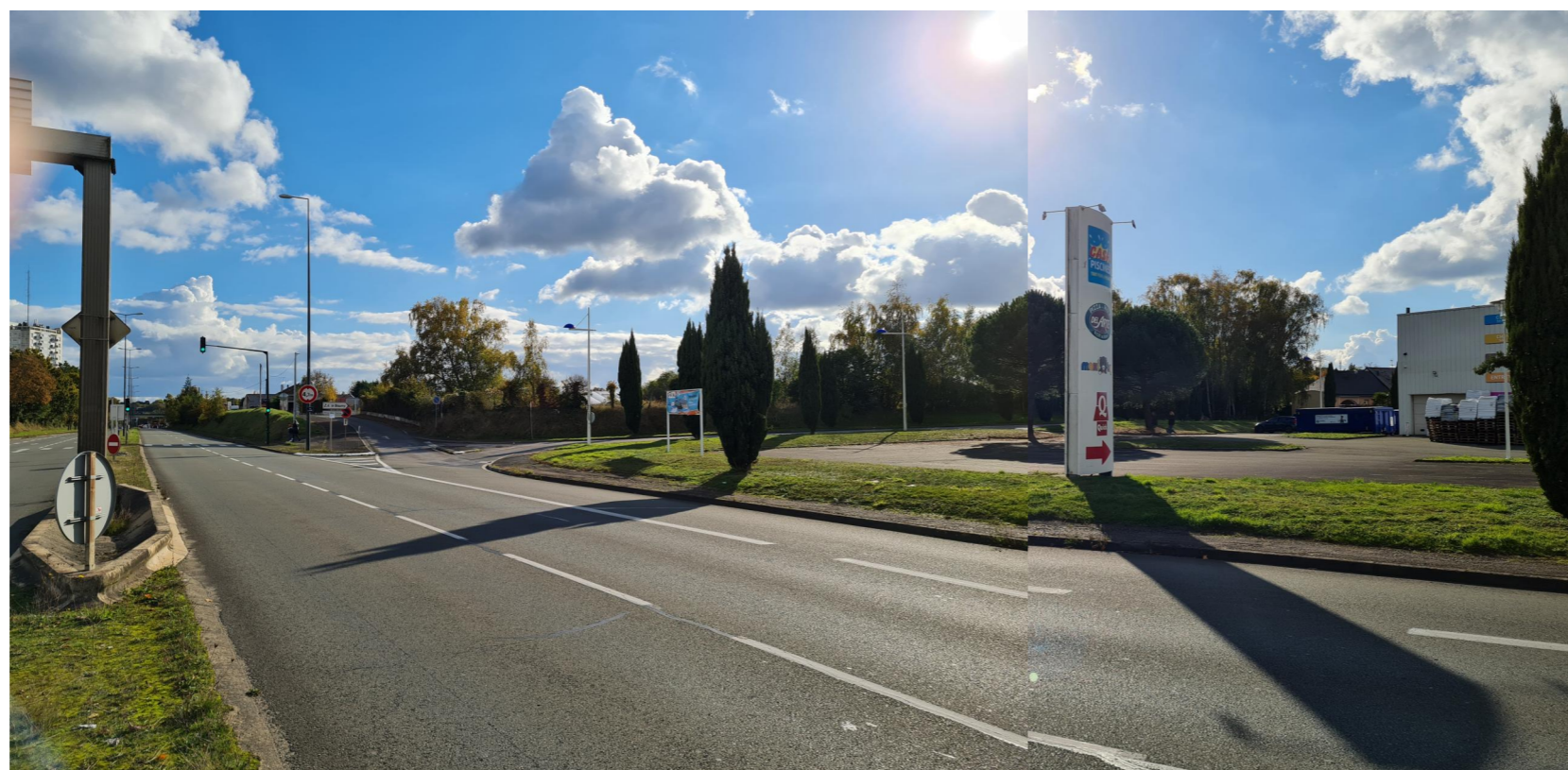




PC08-1- rue Berthe Marcou



PC08-2 - rue du Bourny



PC08-3 - Boulevard du 08 mai 1945

**GOLHEN ASSOCIÉS**  
 4, rue du Pâtis Tatelin  
 3 5 7 0 0 R E N N E S  
 Tél. 02 99 68 65 12  
 Fax. 02 99 68 68 97  
[agence@golhen-associes.archi](mailto:agence@golhen-associes.archi)





TRANSFORMATEUR  
ELECTRIQUE  
A CONSERVER

ANCIEN  
TRANSFORMATEUR  
ELECTRIQUE  
A DEMOLIR

**GOLHEN ASSOCIÉS**  
4, rue du Pâtis Tatelin  
35700 RENNES  
Tél. 02 99 68 65 12  
Fax. 02 99 68 68 97  
agence@golhen-associes.archi

ANCIEN  
TRANSFORMATEUR  
ELECTRIQUE  
A DEMOLIR

TRANSFORMATEUR  
ELECTRIQUE  
A CONSERVER

